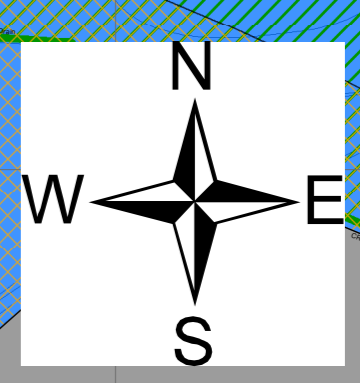
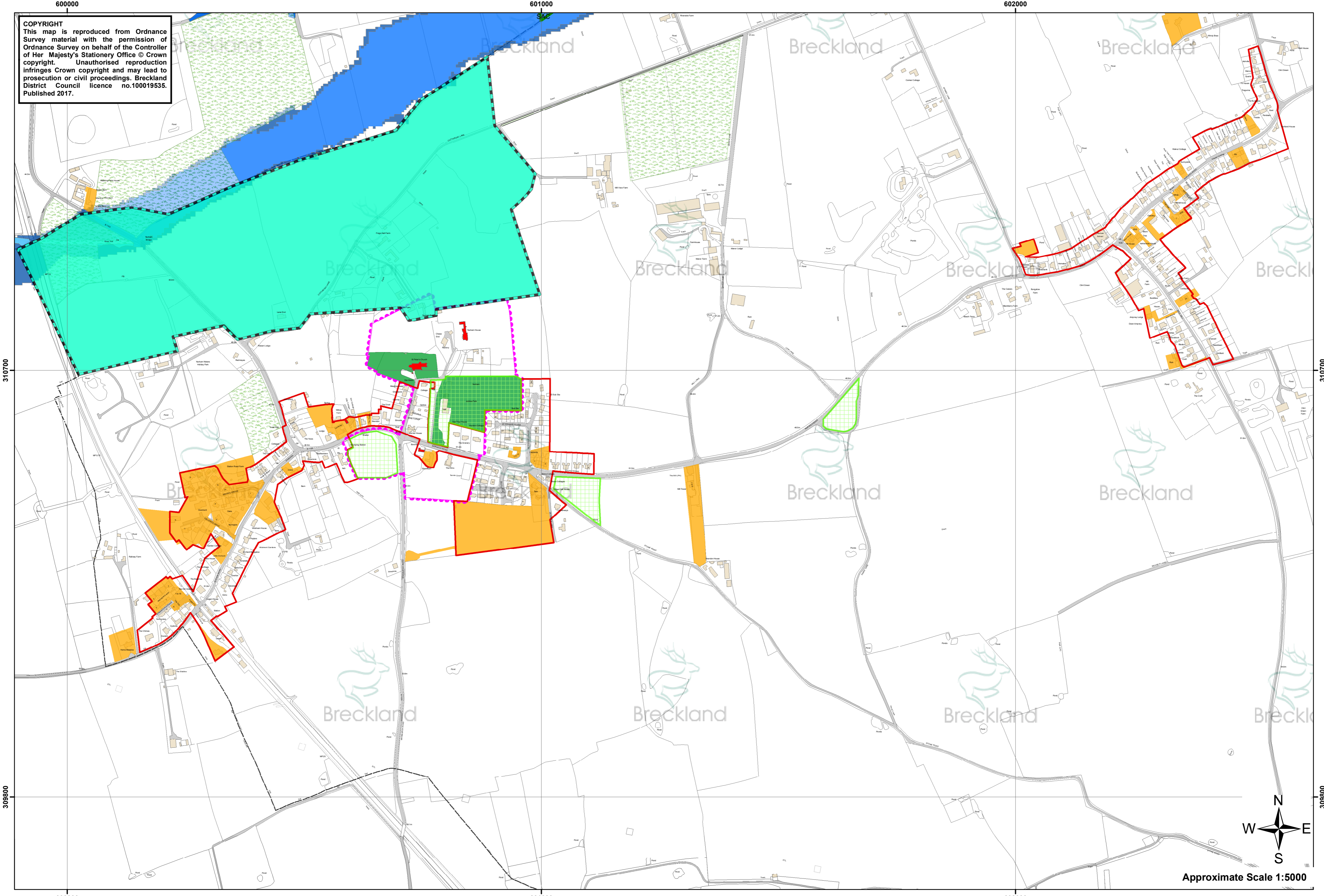


**COPYRIGHT**  
This map is reproduced from Ordnance Survey material with the permission of Ordnance Survey on behalf of the Controller of Her Majesty's Stationery Office © Crown copyright. Unauthorised reproduction infringes Crown copyright and may lead to prosecution or civil proceedings. Breckland District Council licence no.100019535. Published 2017.



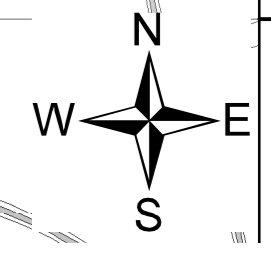
Approximate Scale 1:5000

**COPYRIGHT**  
This map is reproduced from Ordnance Survey material with the permission of Ordnance Survey on behalf of the Controller of Her Majesty's Stationery Office © Crown copyright. Unauthorised reproduction infringes Crown copyright and may lead to prosecution or civil proceedings. Breckland District Council licence no.100019535. Published 2017.



**Yaxham Policies Map**  
Adopted May 2017

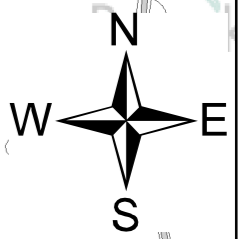
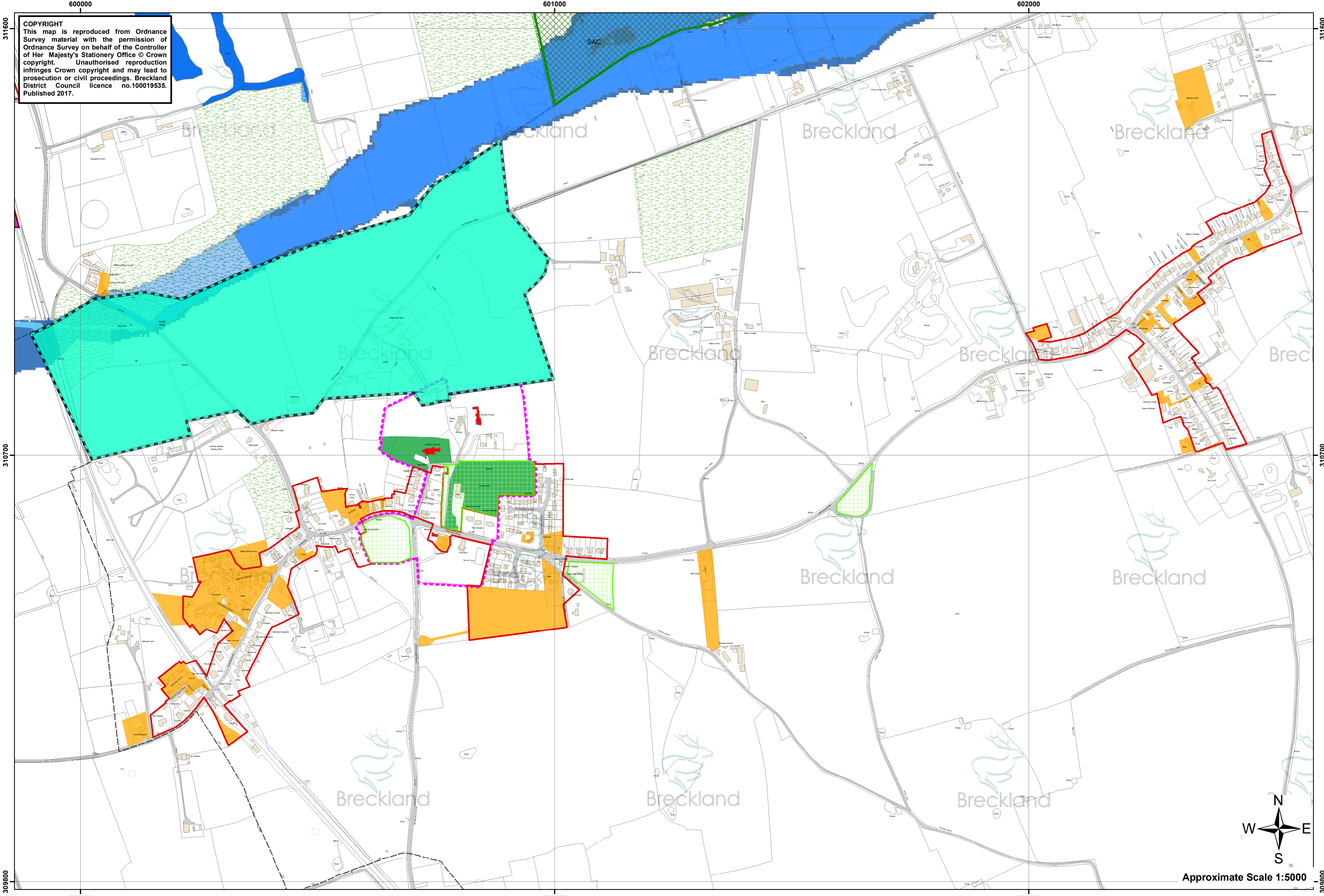
009803C



Approximate Scale 1:5000



**COPYRIGHT**  
This map is reproduced from Ordnance Survey material with the permission of Ordnance Survey on behalf of the Controller of Her Majesty's Stationery Office © Crown copyright. Unauthorised reproduction infringes Crown copyright and may lead to prosecution or civil proceedings. Breckland District Council licence no.100019535. Published 2017.

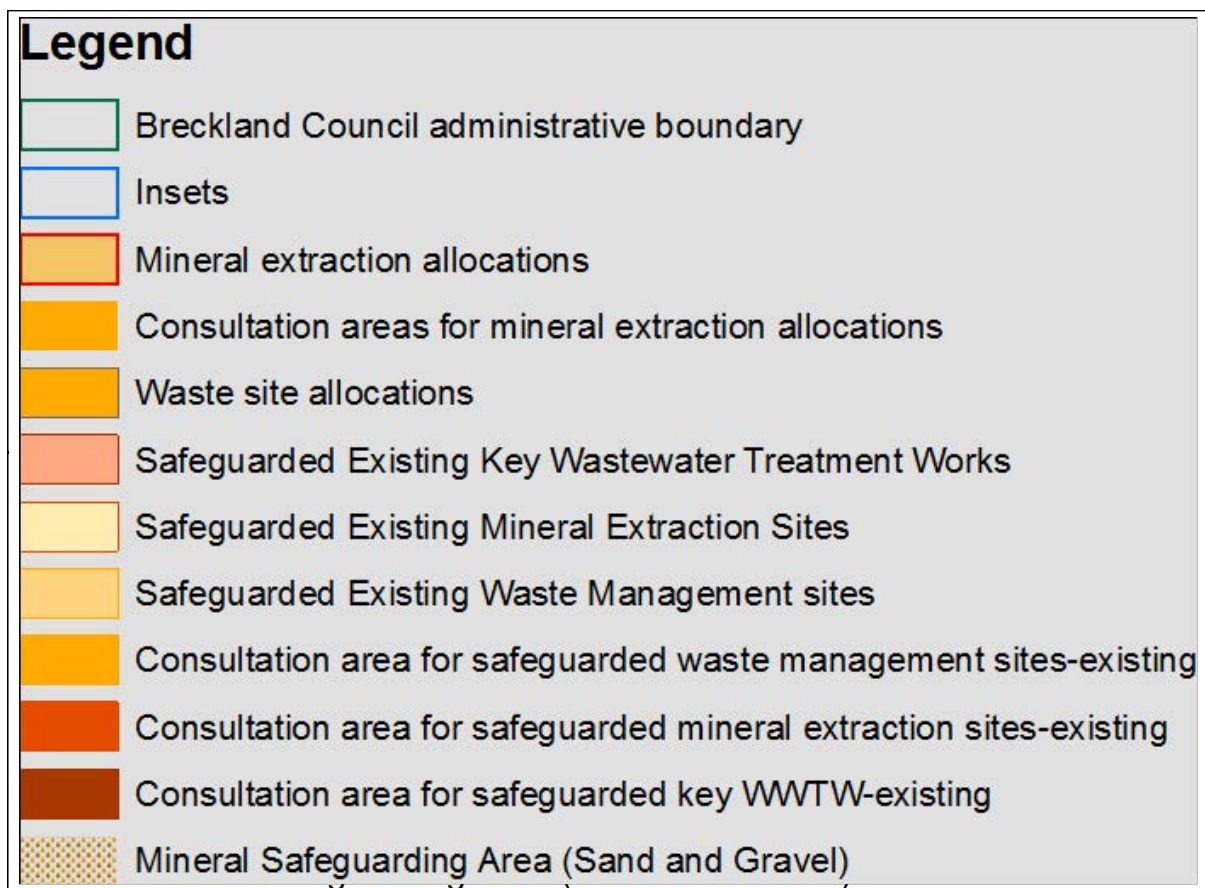


Approximate Scale 1:5000

**Yaxham Policies Map**  
**Pre Submission Publication Summer 2017**



**Adopted Norfolk Minerals and Waste Development Framework**  
**Minerals and waste sites, allocations and mineral resources**  
**safeguarded by the**  
**Norfolk Minerals and Waste Core Strategy Policy CS16 – Safeguarding.**



For further information on Minerals and Waste safeguarding in Norfolk please see the Norfolk County Council website at [www.norfolk.gov.uk/nmwdf](http://www.norfolk.gov.uk/nmwdf)