

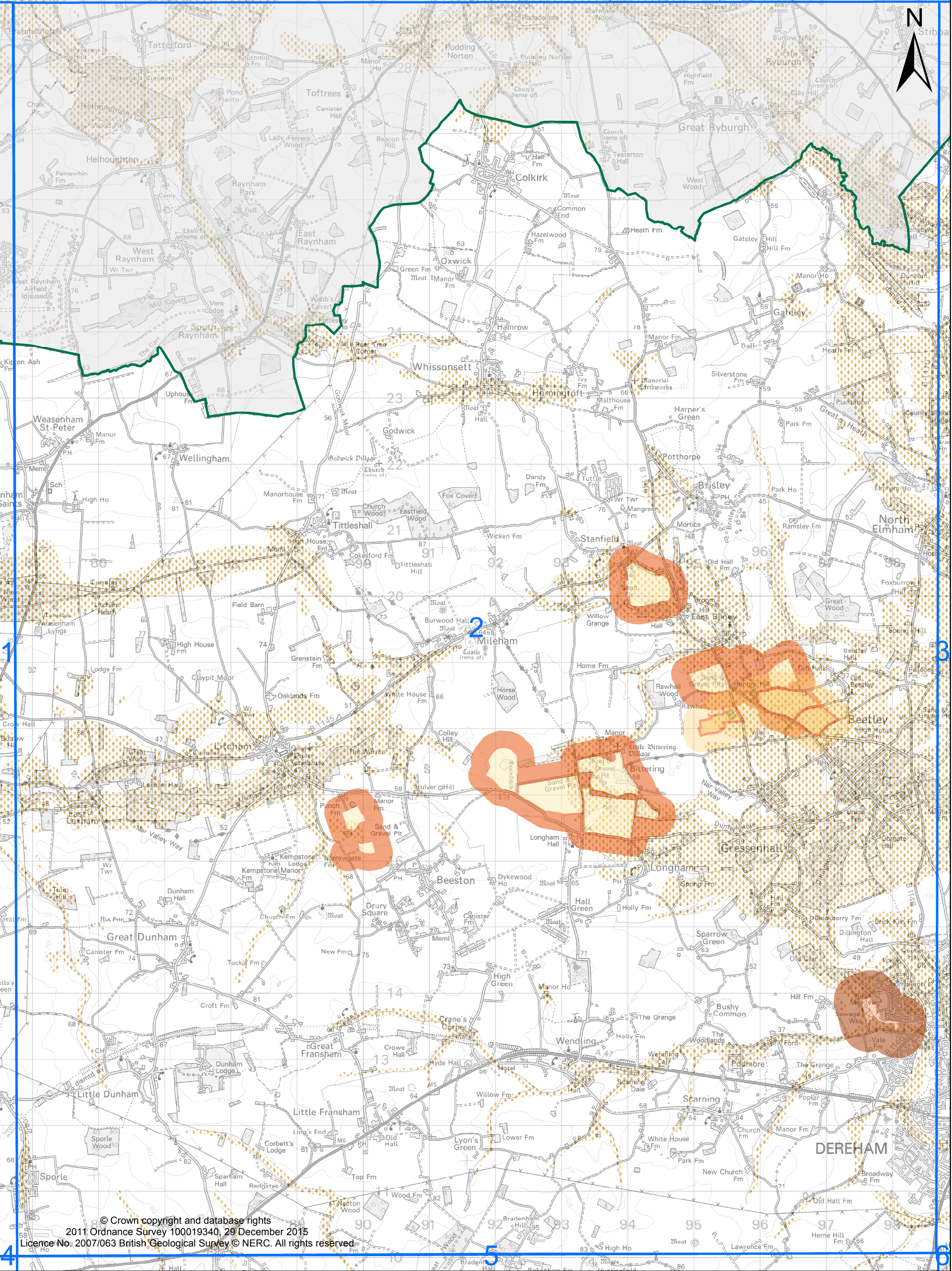
© Crown copyright and database rights
2011 Ordnance Survey 100019340, 29 December 2015
Licence No. 2007/063 British Geological Survey © NERC. All rights reserved

4

2

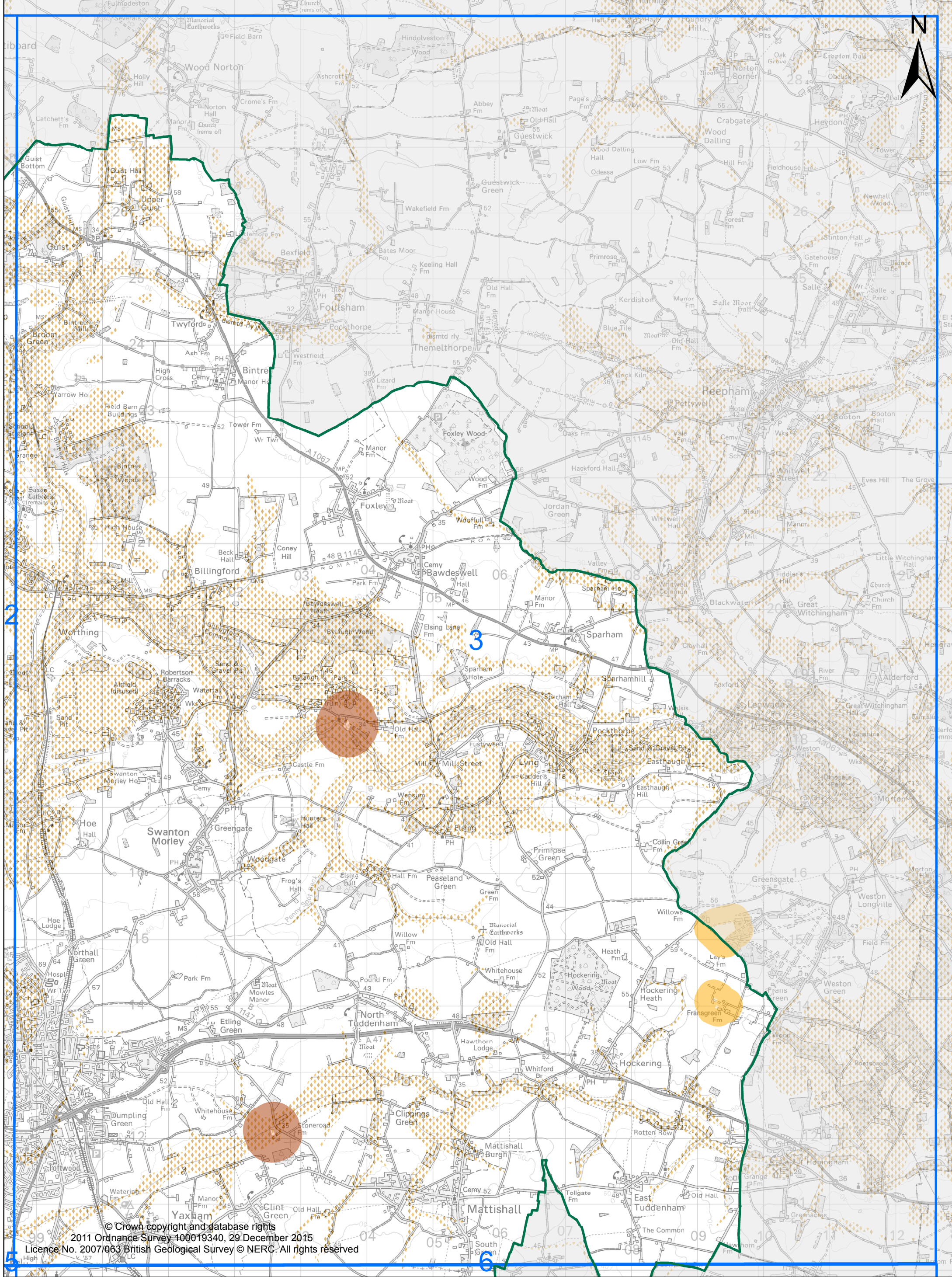
6





© Crown copyright and database rights
2011 Ordnance Survey 100019340, 29 December 2015
Licence No. 2007/063 British Geological Survey © NERC. All rights reserved.





© Crown copyright and database rights
2011 Ordnance Survey 100019340, 29 December 2015
Licence No. 2007/063 British Geological Survey © NERC. All rights reserved

